

# Specification

For

## UE2513-V1.2

Customer	
Date	
Signature	

Approved by	
Date	

SH

# **CONTENTS**

General Description .....	2
Features.....	2
Application Scope.....	3
Driver Board Introduction.....	3
1. Brief Diagram.....	3
2. Port Definition.....	3
3. Pin Assignment.....	4-8
Mechanical Drawing.....	9

SHENZHEN VIEWE TECHNOLOGY CO., LTD

## GENERAL DESCRIPTION

- ◆ APPLY TO MULTIPLE LCD MODULE: LVDS.
- ◆ HDMI DVI VGA AND VIDEO INPUT SYSTEM
- ◆ POWER SOURCE DC 12V
- ◆ OPERATING TEMPERATURE -20°C ~ 70°C
- ◆ STORAGE TEMPERATURE -30°C ~ 80°C
- ◆ WEIGHT TPD±5g

SHENZHEN VIEWE TECHNOLOGY CO., LTD

## APPLICATION SCOPE

- PC MONITOR
- INDUSTRY CONTROL MONITOR

## FEATURES

Chioset	RTD2513A			
OSD LANGUAGE	Chinese ,English			
Panel	Resolution	UP to 1920x1200		
	Interface	6bit/ 8bit Single/Dual LVDS		
Input Signal	DVI	MODE	Max: 1920x1200	
		VGA	MODE	Max: 1920x1200
		Signal	0.7V p-p@75ohm	
		H-Frequency	30-80KHz	
		V-Frequency	56-75Hz	
	HDMI	Version	V1.3	
		HDCP	HDCP 1.1 compliant receiver	
		Format	480i,480p,576i,576p,720p,1080i,1080p	
Frame rate		30fps,50fps,60fps		
Output Signal	Audio Output	Fre.q Response	100Hz-15KHz @±3dB	
		Max Output power	2x8W(8Ω) THD+N<10%	
	Video Output	Video system	PAL,NTSC,SECAM	
		Video Level	1.0Vp-p +/-5%	
Power	Input	+12V +/-10%		
	Manage	Standby<0.5W (Board Only)		
	Panel voltage	+3.3V,+5V, +12V(POWER IN)		

## DRIVER BOARD INTRODUCTION

1. Brief Diagram (Refer Appendix Page For Details)

### 2. Port Definition

- a) JP6-----Power input port ( DC12V )
- b) JP1-----Power input port ( DC12V ) (PH2.0 4Pin)
- c) VGA-----Analog VGA input port (DB15);
- d) JP3 -----Analog VGA input port (PH2.0 12Pin);
- e) HDMI ----- HDMI input port
- f) JP2 ----- HDMI input port ( 2\*8\*2.0mm )
- g) JP10 -----Keyboard operation port;
- h) JP9-----Connection port of Driver Board with LCD connector (LVDS);

**\* All ports define square pad as the first position in this specification.**

### 3.PIN ASSIGNMENT

**JP1 : Power input port ( JST B4B-PH-K-S or compatibility )**

Pin NO	DEF.	Pin NO	DEF.
1	+12V	3	GND
2	+12V	4	GND

**JP3: 12PIN VGA Connector (JST B12B-PH-K-S or compatibility)**

Pin NO	DEF	Pin NO	DEF	Pin NO	DEF	Pin NO	DEF
1	SCL	4	BLUE	7	GND	10	HSYNC
2	SDA	5	GND	8	RED	11	VSYNC
3	GND	6	GREEN	9	GND	12	GND

**VGA: DB15 VGA Connector**

Pin NO	DEF.	Pin NO	DEF.	Pin NO	DEF.
1	RED	6	GND	11	NC
2	GREEN	7	GND	12	SDA
3	BLUE	8	GND	13	HD
4	NC	9	NC	14	VD
5	GND	10	CON	15	SCL

**HDMI1: HDMI INPUT Connector (Tyco 1747981-1 or compatibility)**

Pin NO	DEF	Pin NO	DEF	Pin NO	DEF	Pin NO	DEF
1	DATA2+	6	DATA1-	11	GND	16	SDA
2	GND	7	DATA0+	12	CLK-	17	GND
3	DATA2-	8	GND	13	CEC	18	+5V
4	DATA1+	9	DATA1-	14	NC	19	HPD
5	GND	10	CLK+	15	SCL		

**JP2: 2\*8\*2.0mm HDMI Connector**

Pin NO	DEF	Pin NO	DEF	Pin NO	DEF	Pin NO	DEF
1	HDMI 5	5	GND	9	GND	13	RX1P
2	HPD	6	GND	10	GND	14	RX1N
3	SCL	7	RXCP	11	RX0P	15	RX2P
4	SDA	8	RXCN	12	RX0N	16	RX2N

**JP10: Key Connector (JST B14B-PH-K-S or compatibility)**

Pin NO	DEF.	Pin NO	DEF.	Pin NO	DEF.
1	RIGHT	5	DOWN	9	LED_R
2	LIFT	6	UP	10	POWER
3	MENU	7	GND	13	
4	AUTO	8	LED_G	14	

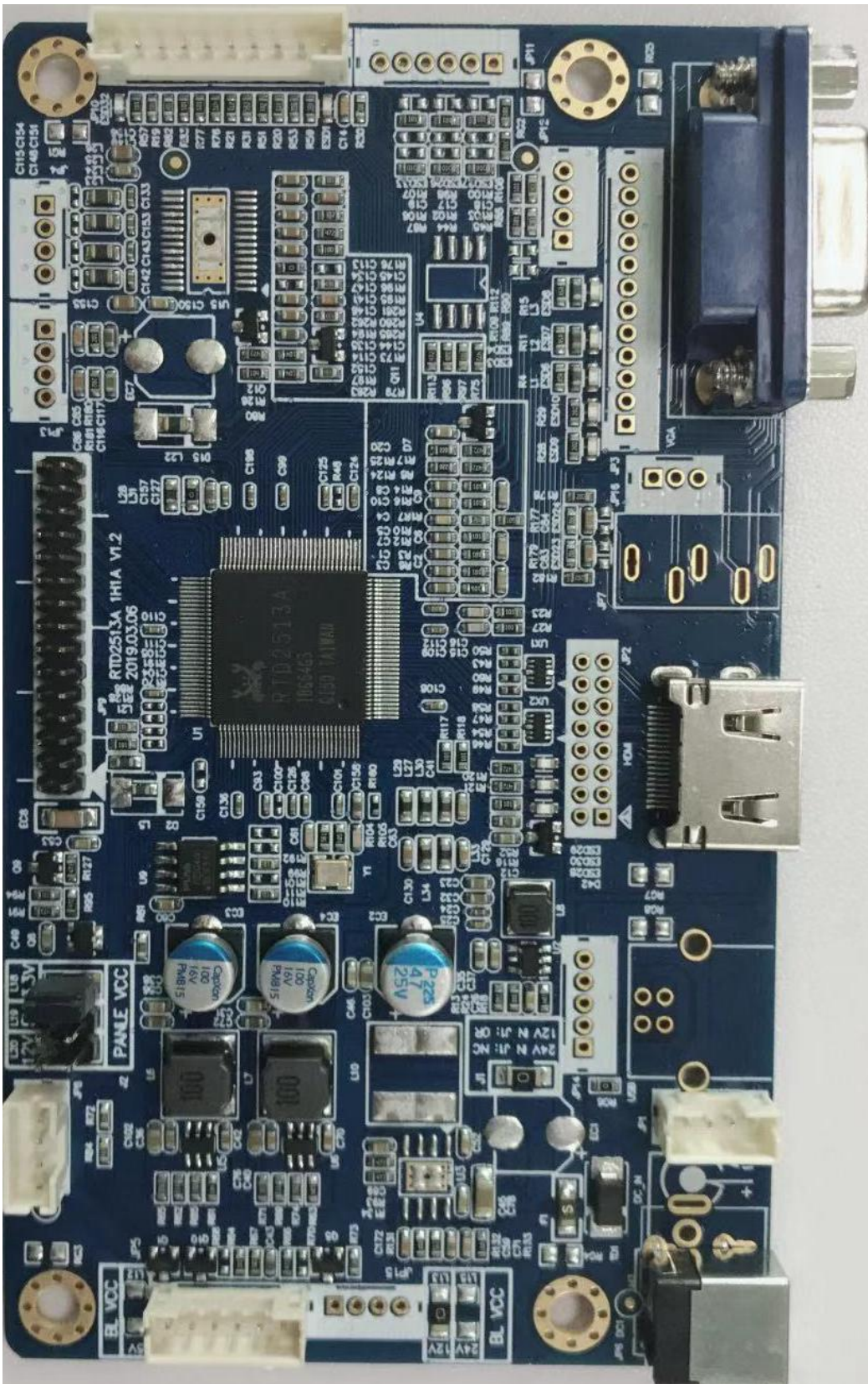
**JP9: LVDS Connector for UE101WX-RB40-L017**

Pin NO	DEF.	Pin NO	DEF.	Pin NO	DEF.	Pin NO	DEF.
1	P_VCC	9	RXO1-	17	RXO3-	25	GND
2	P_VCC	10	RXO1+	18	RXO3+	26	GND
3	P_VCC	11	RXO2-	19	RXE0-	27	RXEC-
4	GND	12	RXO2+	20	RXE0+	28	RXEC+
5	GND	13	GND	21	RXE1-	29	RXE3-
6	GND	14	GND	22	RXE1+	30	RXE3+
7	RXO0-	15	RXOC-	23	RXE2-		
8	RXO0+	16	RXOC+	24	RXE2+		

**JP5: Inverter Connector (JST B6B-PH-K-S or compatibility)**

Pin NO	DEF.	Pin NO	DEF.	Pin NO	DEF.
1	GND	3	ADJ	5	VCC
2	GND	4	ON/OFF	6	VCC

Driver Board



VIEWE LTD



**MECHANICAL DRAWING**

